

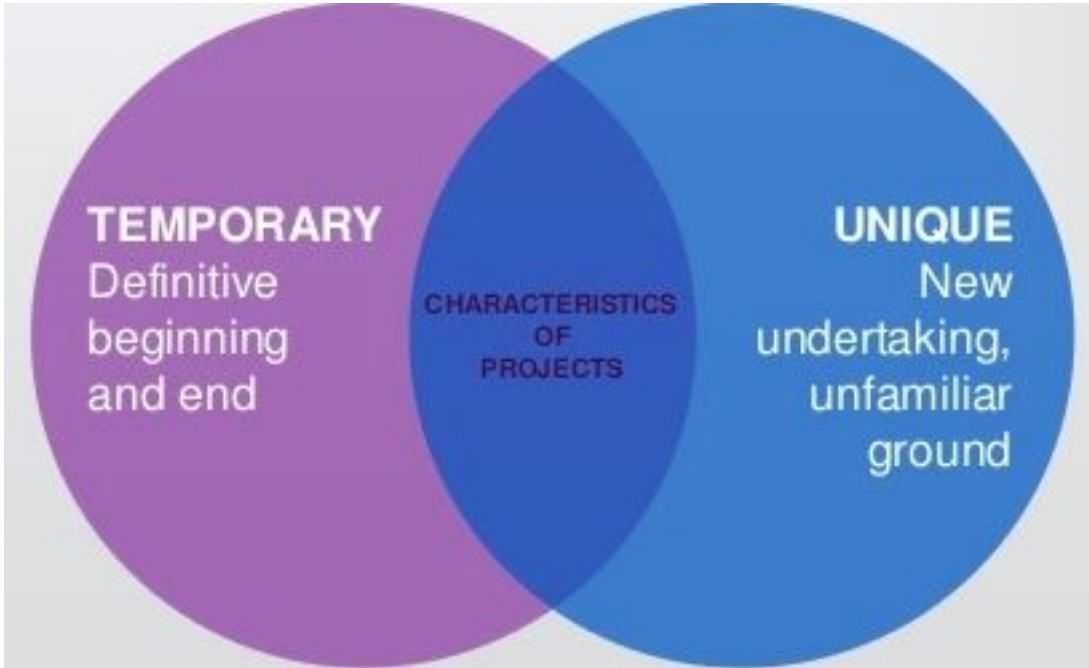


# Professional Services: migration, integration, deployment and business analysis

**Alexander Zalugovskiy**

Project Manager

# What is the project about?



- Requirements are met / exceeded
- Defined time frame
- Defined budget
- Accepted by the customer

# Before



# Now

- Prime integrator role
- Dedicated Engineering resources
- Dedicated Project Manager
- YOU choose the communication channel
- Business Analysis phase
- System Engineering phase
- Accompanying documentation
- Turn-key integrations and deployments

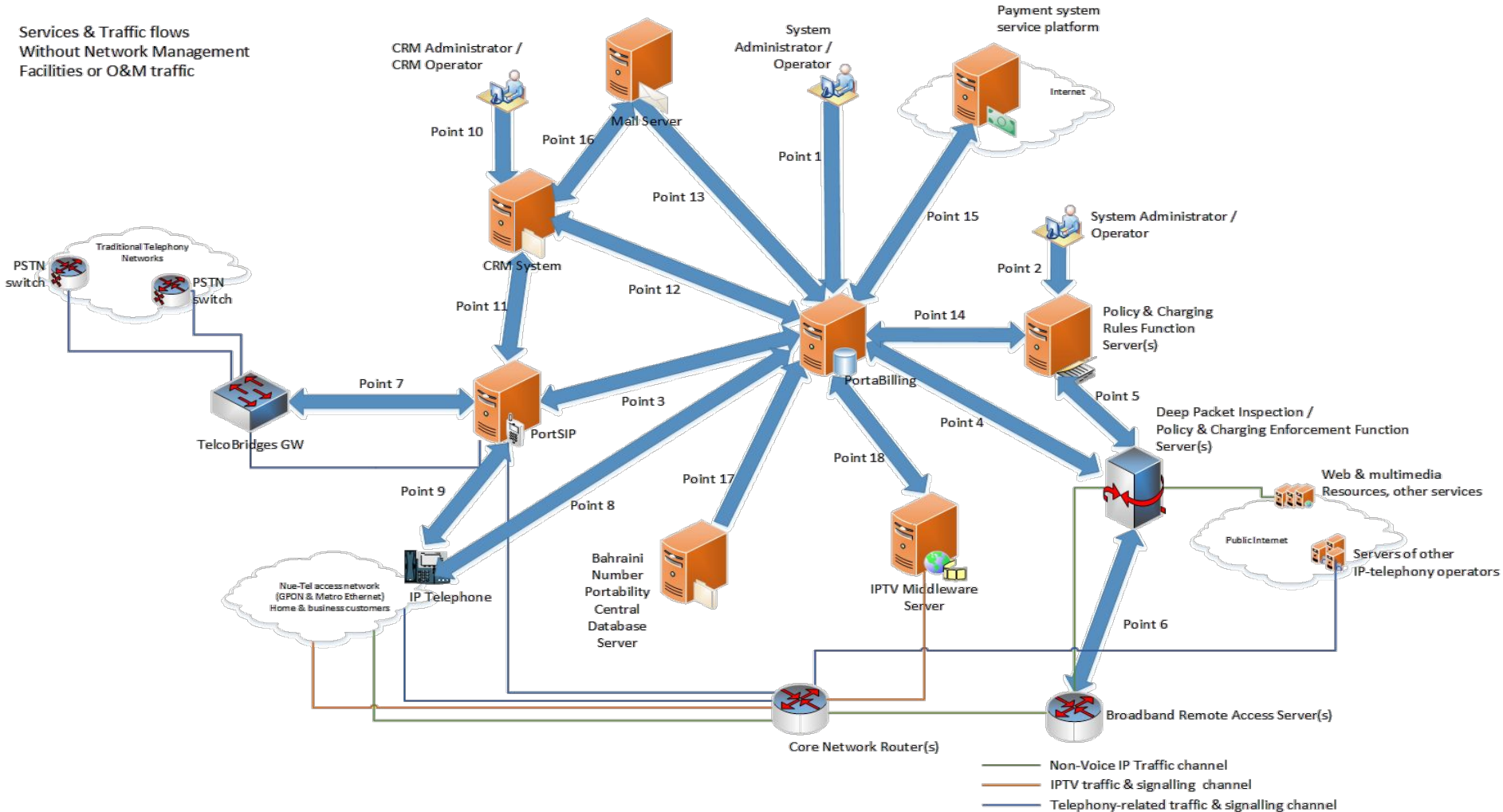
# Migration as part of PortaOne Professional Services



- On-site Business Analysis
- Systems Engineering
- Dedicated Project Manager
- Solution Design

# A large integration project could be a real challenge

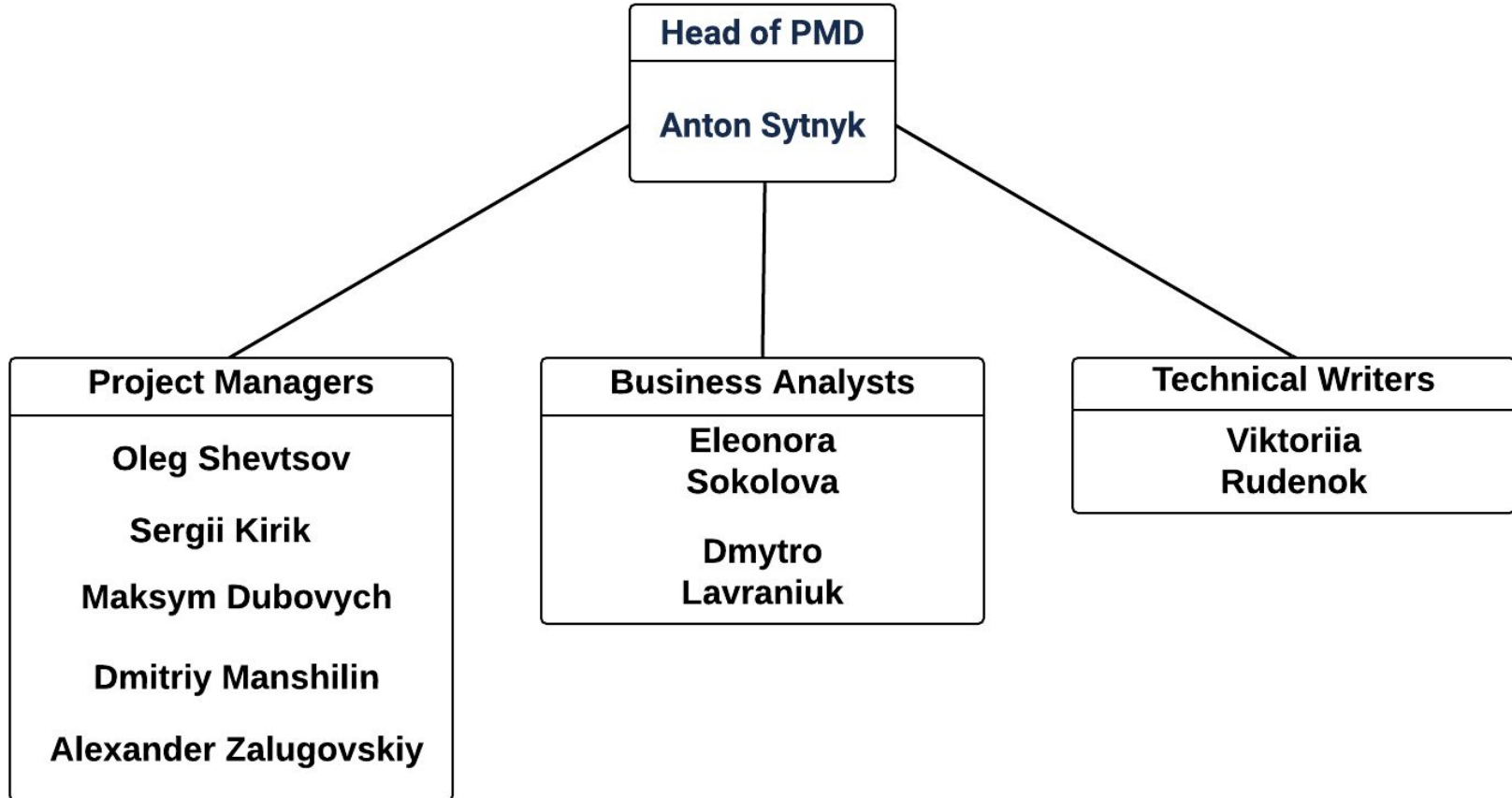
Services & Traffic flows  
Without Network Management  
Facilities or O&M traffic



- In-house billing
- Voice and Data business
- 30 000 users for Phase 1



- Business Analyst
- Project Manager
- Migration Project Manager
- System Engineers
- Software Developers
- Application Engineer





## Why choose PortaOne for Your Professional Services?

- We possess ALL the required knowledge and expertise necessary
- Prime integrator role
- 24/7 superb technical support
- Faster time-to-market for new services
- Open flexibility for easy integration
- Fixed total cost





Thank you!

Alexander Zalugovskiy

Project Manager



**GRANDSTREAM**  
CONNECTING THE WORLD

Diamond Sponsor