

Grandstream Networks

**Portaone Partner Event
June 2019**

About Grandstream

- **Founded in 2002**
- **Over 600 employees**
- **Product Portfolio contains over 40 products: *Business Conferencing, IP Phones, Gateways and ATAs, Networking Devices, Surveillance and Facility Access Systems, and Award Winning IP PBXs***
- **Primarily serving small-to-medium size businesses (SMBs) and consumer markets**

US



Boston - Headquarters
Los Angeles, CA
Dallas, TX

China



Hanghou, Shenzhen
Hong Kong - Warehouse

Morocco



Casablanca - Support Center, EMEA

Venezuela



Venezuela- Support Center, LATM

Netherlands



Moerdijk - Warehouse

Malaysia



Kuala Lumpur – Support Center, APAC



Total Grandstream Solution



IP Telephony

Audio IP Phones
Video IP Phones
ATAs & Gateways
IP PBXS



Conferencing

Video Conference Systems
Audio Conference Phone



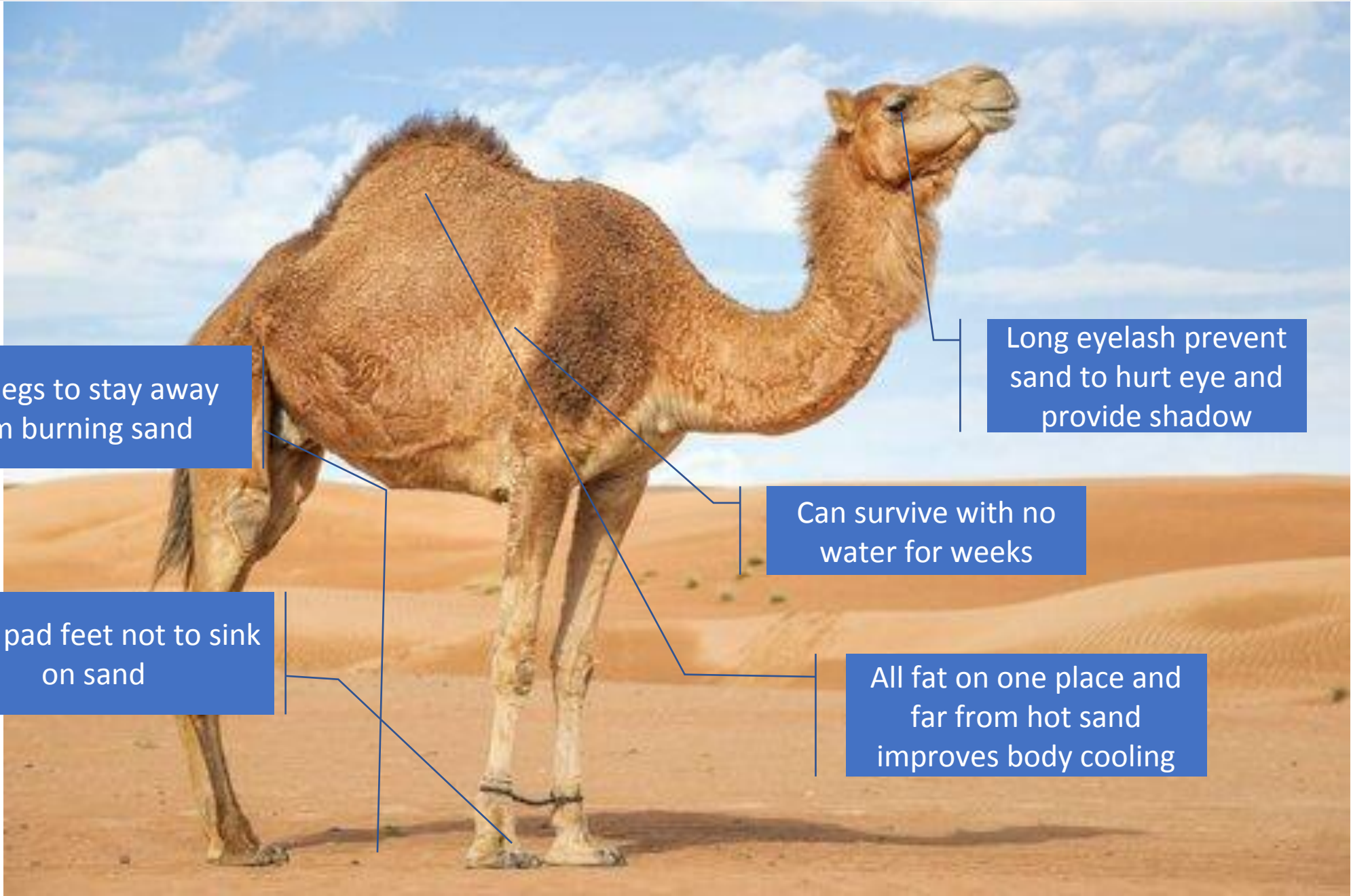
Network Products

WiFi Access Points
Gigabit VPN Router



Security Products

Facility Access Systems
Surveillance Cameras
Video Management Systems



Long legs to stay away from burning sand

Long eyelash prevent sand to hurt eye and provide shadow

Can survive with no water for weeks

Wide pad feet not to sink on sand

All fat on one place and far from hot sand improves body cooling



Carrier-Grade IP Phones: GRP2600 Series

Advanced User Efficiency, Powerful Telephony Features, Single Firmware Version

Our carrier-grade line of IP phones delivers a wide range of powerful devices that come equipped with advanced call features that focus on user productivity and efficiency. They were made with ITSP and SP mass-deployments in mind.

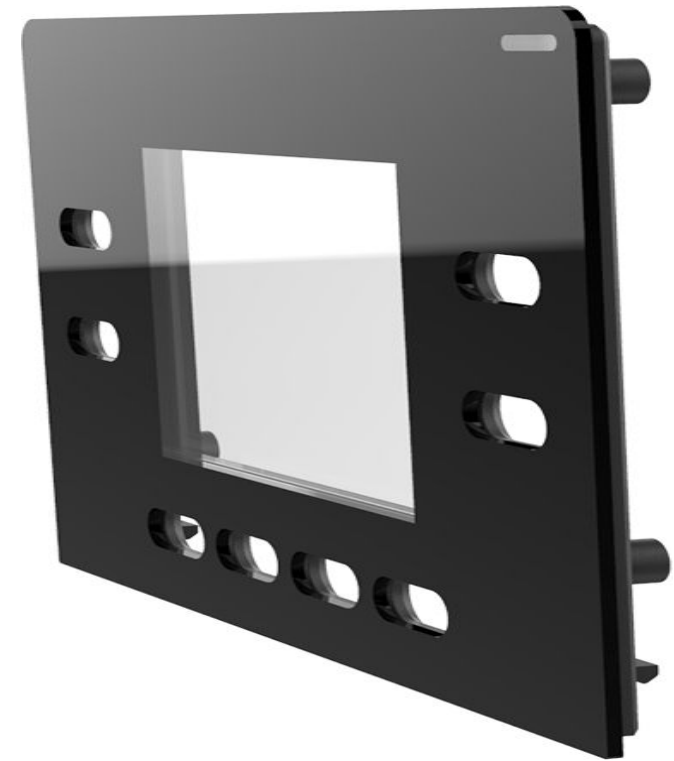
- Advanced call support
- 2 to 16 SIP accounts, depending on model
- WiFi support on select models
- PoE support/PoE option for all models
- Market leading security and encryption
- Unified firmware
- Opus support





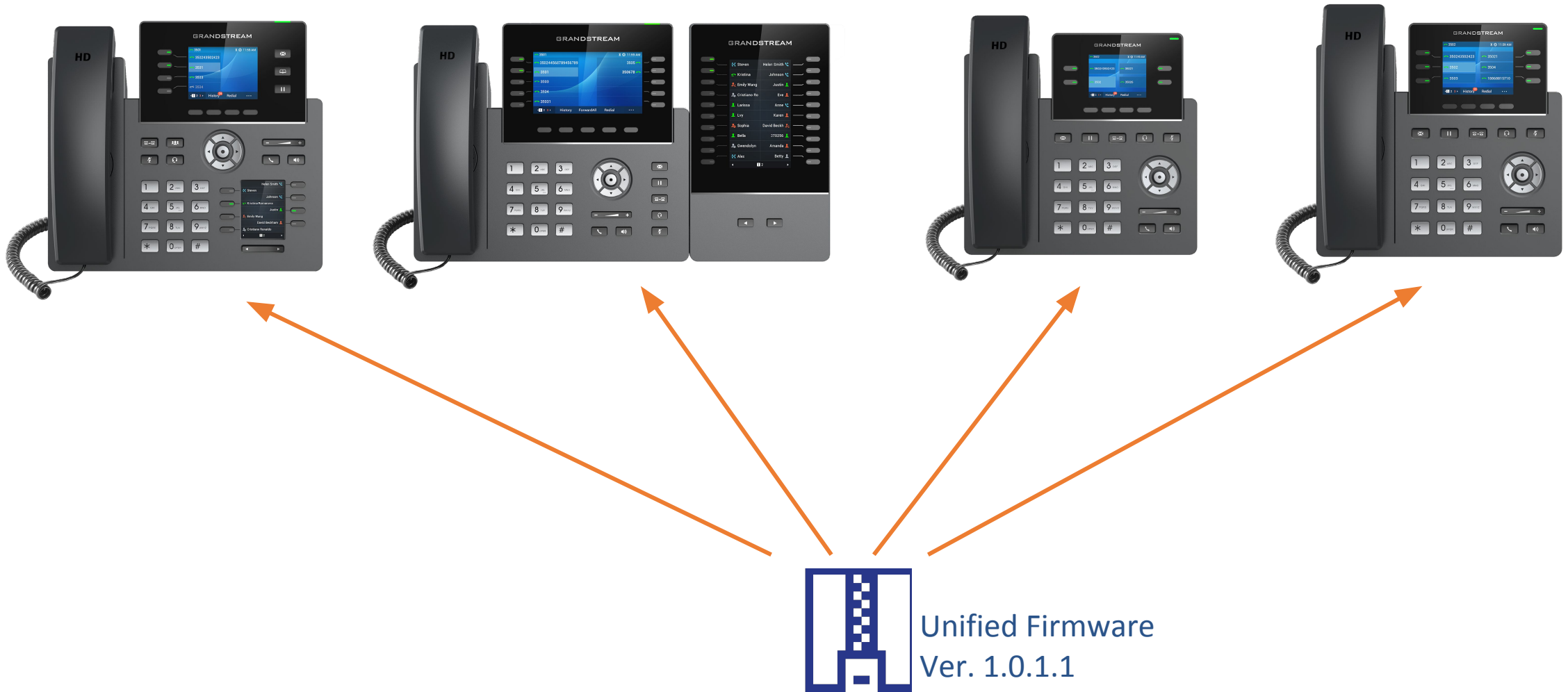
Replaceable LCD Panel

Easy OEM





Unified Firmware Across GRP Series









- 2+2 shared line keys & BLF keys, up to 4 SIP accounts
- 2.4" 320x240 color LCD with 4 programmable soft keys
- Dual 100M network ports
- HD handset, hands-free speakerphone, and headsets
- 1Gbit embedded NAND Flash storage for dual firmware images, local call recording, large phone book, personal music-on-hold files, etc
- 3 model options (GRP2612 with PSU, GRP2612P with PoE, and GRP2612W with dual-band 802.11ac WiFi/Bluetooth & PoE)





- 3+3 shared line keys & BLF keys, up to 6 SIP accounts
- 2.8" 320x240 color LCD with 4 programmable soft keys
- Dual Gigabit network ports with PoE
- HD handset, hands-free speakerphone, and headsets
- 1Gbit embedded NAND Flash storage for dual firmware images, local call recording, large phone book, personal music-on-hold files, etc





- 4 line keys, up to 12 SIP accounts
- 2.8" 320x240 primary color LCD with 4 programmable soft keys, 2.4" 240x320 secondary color LCD allowing up to 48 programmable virtual BLF keys
- Dual Gigabit network ports with PoE
- Integrated dual-band 802.11ac WiFi & Bluetooth
- HD handset, hands-free speakerphone, and headsets
- 1Gbit embedded NAND Flash storage for dual firmware images, local call recording, large phone book, personal music-on-hold files, etc





- 5+5 shared line keys & BLF keys, up to 16 SIP accounts
- 4.3" 480x272 color LCD with 5 programmable soft keys
- Dual Gigabit network ports with PoE
- Integrated dual-band 802.11ac WiFi & Bluetooth
- HD handset, hands-free speakerphone, and headsets
- 1Gbit embedded NAND Flash storage for dual firmware images, local call recording, large phone book, personal music-on-hold files, etc
- Support for up to 4 cascaded expansion modules



GRP2615 + Expansion Module With Color LCD





THANK YOU