

Porta  Switch™



**Configuration Server
Web Reference**

Maintenance Release 22

Copyright Notice & Disclaimers

Copyright © 2000-2011 PortaOne, Inc. All rights reserved

**PortaSwitch® Configuration Server Web Reference, February 2011
Maintenance Release 22
V1.22.8**

Please address your comments and suggestions to: Sales Department,
PortaOne, Inc. Suite #408, 2963 Glen Drive, Coquitlam BC V3B 2P7
Canada.

Changes may be made periodically to the information in this publication. The changes will be incorporated in new editions of the guide. The software described in this document is furnished under a license agreement, and may be used or copied only in accordance with the terms thereof. It is against the law to copy the software on any other medium, except as specifically provided for in the license agreement. The licensee may make one copy of the software for backup purposes. No part of this publication may be reproduced, stored in a retrieval system, or transmitted in any form or by any means, electronic, mechanical, photocopied, recorded or otherwise, without the prior written permission of PortaOne, Inc.

The software license and limited warranty for the accompanying products are set forth in the information packet supplied with the product, and are incorporated herein by this reference. If you cannot locate the software license, contact your PortaOne representative for a copy.

All product names mentioned in this manual are for identification purposes only, and are either trademarks or registered trademarks of their respective owners.

Table of Contents

Document Objectives 5
 Hardware and Software Requirements 5

1. Introduction 6
 Login to Configurator Interface..... 7

2. System Management 10
 Servers 11
 Configurations 15
 Environments 18
 Users 19
 Update..... 20
 Information Window 20

Preface

This document provides a general overview of the web interface for the PortaSwitch® configuration server.

Where to Get the Latest Version of this Guide

The hard copy of this guide is updated at major releases only, and does not always contain the latest material on enhancements occurring between minor releases. The online copy of this guide is always up to date, and integrates the latest changes to the product. You can access the latest copy of this guide at: www.portaone.com/support/documentation/.

Conventions

This publication uses the following conventions:

- Commands and keywords are given in **boldface**
- Terminal sessions, console screens, or system file names are displayed in fixed width font



Exclamation mark draws your attention to important information or action.

NOTE: Notes contain helpful suggestions about or references to materials not contained in this manual.



Timesaver means that you can save time by taking the action described in the paragraph.



Tips provide information that might help you solve a problem.

Trademarks and Copyrights

PortaBilling®, PortaSIP®, PortaUM® and PortaSwitch® are registered trademarks of PortaOne, Inc.

Document Objectives

This publication provides technical information on the PortaSwitch® configuration server's web interface usage. It is designed for use either in conjunction with other materials or as a standalone reference.

Audience

The target audience of this document is comprised of system administrators, VoIP engineers and system operators who will be managing your PortaSwitch® system via the web interface of the configuration server.

Hardware and Software Requirements

Client System Recommendations

- OS: Windows XP, Vista or 7, UNIX or Mac OS X
- Browser: Internet Explorer 7.0, FireFox 3.x with JavaScript enabled
- Spreadsheet processor (MS Excel)
- Display settings:
 - Minimum screen resolution: 1024 x 768
 - Color palette: 16 bit color (minimum)

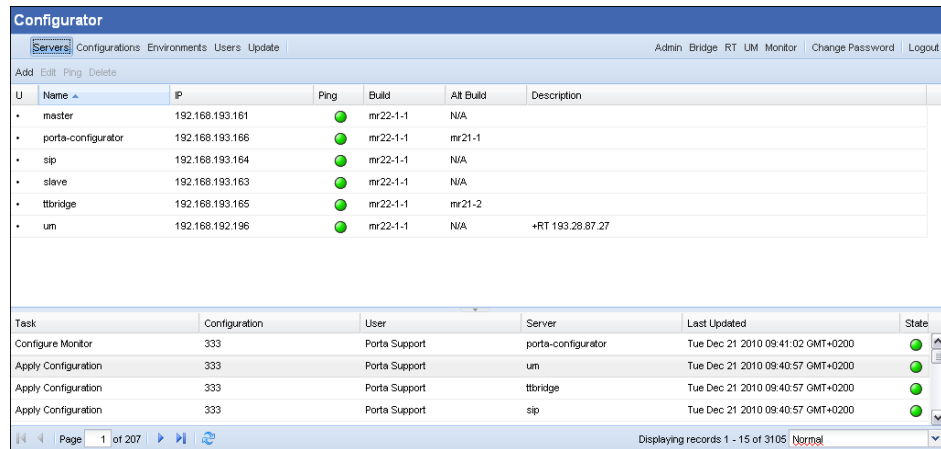
1. Introduction

Login to the Configurator Interface

Open the configurator page in a browser (https://your_configurator_server_name:8700 by default) and type in the username and password which were provided to you.

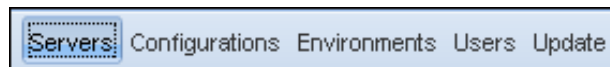
The web interface of the configuration server contains:

- Tab selector
- Action buttons
- Toolbar
- Data table
- Information window



Tab Selector

In the upper left-hand corner are five functional tabs, which allow you to manage the different elements of your PortaSwitch system.



The functional tabs are: Servers, Configurations, Environments, Users and Update. The meaning and available functionality for each tab are explained in the following sections.

Note that not all users have complete access to the entire set of tabs. The access levels for users are the following: root, admin, read-only and monitor. **Root** provides access to all options and tabs and means that you can also see the **Users** button and modify the information and rights of other users. **Admin** provides access to all of the options except for the **Users** button. **Read-only** users have access to all the same tabs as **Root**,

but cannot make changes. **Monitor** only gives access to the monitoring system web interface via the **Monitor** button.

Action Buttons

Buttons in the upper right-hand corner allow you to perform a given action, irrespective of the current context.



The **Admin** button takes you to the administrator web interface of PortaBilling. The **Bridge** button takes you to the web interface of the PortaBridge and the **UM** button allows quick access to the unified messaging system.

The **RT** button takes you to the web interface of the trouble tickets system where you can view the list of your requests and perform the needed actions (e.g., close, update or create a new ticket).

The **Monitor** button takes you to the web interface of the monitoring facility for your PortaSwitch installation (as of Maintenance Release 21 this runs on the same server as the configuration interface).

The **Change Password** button allows you to change the password for the current user.

The **Logout** button terminates your current session on the web interface.

Toolbar

The Toolbar contains buttons that allow you to perform a specific operation with the data displayed in the data table below.

Data Table

The Data Table is your main working area, since it contains the data you will edit.

You can change the number of columns and sort them in ascending or descending order by clicking your mouse on the field name of any of these tabs. If you point your mouse at the name field you will see a triangle; click on it and a drop-down menu will appear. You can choose how to sort your data and add or remove columns by ticking or unticking items in the drop-down menu. You can also group information by category by using the **Group by this Field** option.

The screenshot shows the 'Configurator' web interface. At the top, there are navigation tabs for 'Servers', 'Configurations', 'Environments', 'Users', and 'Update'. Below this is a toolbar with 'Open', 'Create', 'Clone', 'Delete', and 'Compare' options. The main area displays a table of configurations with columns for 'Configuration', 'User', 'Description', and 'Last Updated'. A context menu is open over the configuration list, showing options like 'Sort Ascending', 'Sort Descending', 'Columns', and 'Group By This Field'. Below the configuration table is a 'Task' table with columns for 'Task', 'Configuration', 'User', 'Server', 'Last Updated', and 'State'.

Configuration	User	Description	Last Updated
343		Cloned from 342.	Wed Dec 29 2010 15:48:24 GMT+0200
342		Cloned from 341.	Wed Dec 29 2010 15:44:41 GMT+0200
341		Cloned from 339.	Wed Dec 29 2010 15:38:49 GMT+0200
340		Cloned from 339.	Tue Dec 28 2010 09:38:03 GMT+0200
339		Cloned from 333.	Tue Dec 28 2010 09:34:44 GMT+0200

Task	Configuration	User	Server	Last Updated	State
Configure Monitor	343	Porta Support	porta-configurator	Wed Dec 29 2010 15:50:04 GMT+0200	●
Apply Configuration	343	Porta Support	tlbridge	Wed Dec 29 2010 15:50:03 GMT+0200	●
Apply Configuration	343	Porta Support	um	Wed Dec 29 2010 15:50:05 GMT+0200	●
Apply Configuration	343	Porta Support	slp	Wed Dec 29 2010 15:50:05 GMT+0200	●
Apply Configuration	343	Porta Support	master	Wed Dec 29 2010 15:50:04 GMT+0200	●
Apply Configuration	343	Porta Support	slave	Wed Dec 29 2010 15:50:04 GMT+0200	●
Apply Configuration	343	Porta Support	porta-configurator	Wed Dec 29 2010 15:50:07 GMT+0200	●

At the bottom of the page, you can see the task pages illustrating which tasks were performed. You can see which user performed the task, the server on which the task was performed and the time of the last update.

2. System Management

Servers

The information on the **Servers** tab shows all the servers that are part of your installation.

Configurator						
Servers Configurations Environments Users Update						
Admin Bridge RT UM Monitor Change Password Logout						
Add Edit Ping Delete						
U	Name	IP	Ping	Build	Alt Build	Description
•	master	192.168.193.161	●	mr22-1-1	N/A	
•	porta-configurator	192.168.193.166	●	mr22-1-1	mr21-1	
•	slp	192.168.193.164	●	mr22-1-1	N/A	
•	slave	192.168.193.163	●	mr22-1-1	N/A	
•	ttbridge	192.168.193.165	●	mr22-1-1	mr21-2	
•	um	192.168.192.196	●	mr22-1-1	N/A	

Field	Description
Used	If you see a dot here, it means that this server has some instances assigned to it, i.e., it is actively running services. In this case you cannot delete this server's record; you can only edit its data.
Name	The name of the server.
IP	The internal IP address of the server – this address is used on the internal LAN to manage the server from the configuration interface.
Ping	This field shows whether the current server is reachable (green light) or unreachable (red light).
Build	The current software version which is installed and used on the server.
Alt Build	Another software version currently installed on the server (on the inactive partition); a rollback to this version is possible. N/A means that the alternative partition does not contain any data.
Description	A short description of the server. This field is optional.

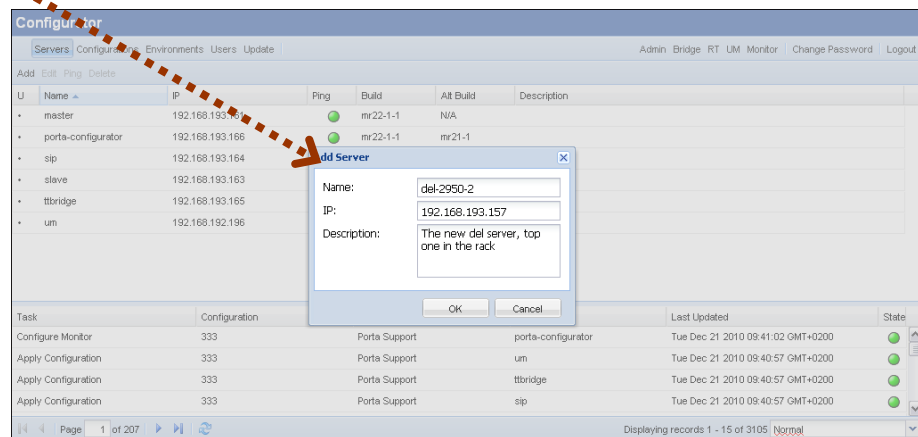
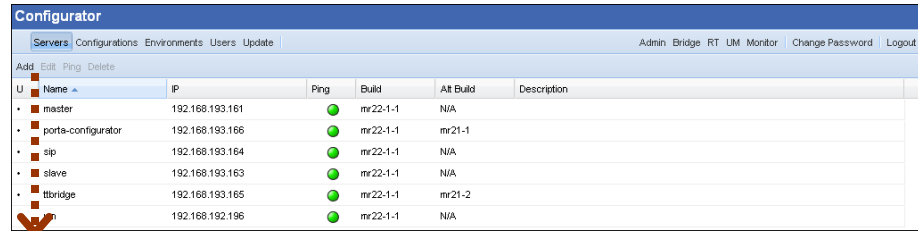
The **Servers** page provides the following activities:

Field	Description
Add	Allows you to add more servers. You will see a pop-up window where you should enter the name of the server, its IP address and a description; then press OK.
Edit	Allows you to edit the data about a given server.
Ping	Allows you to check the availability of the server. Just click on the Ping button and the configuration server will attempt to verify that it can connect to this server and that the server responds to management commands. If you see a green light, the server is

	available; if red, then it is not available.
Delete	Allows you to delete the chosen server.

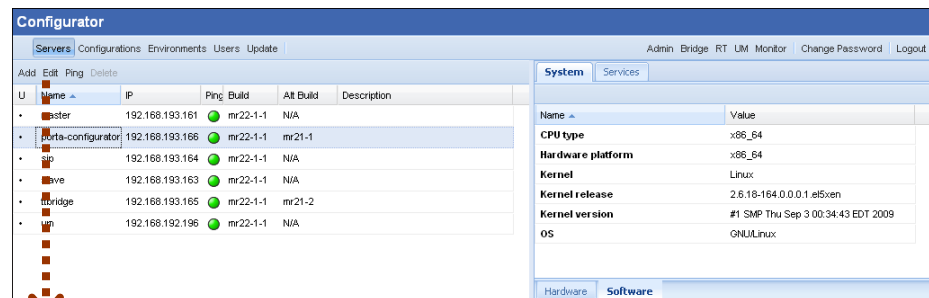
Add / Edit a New Server

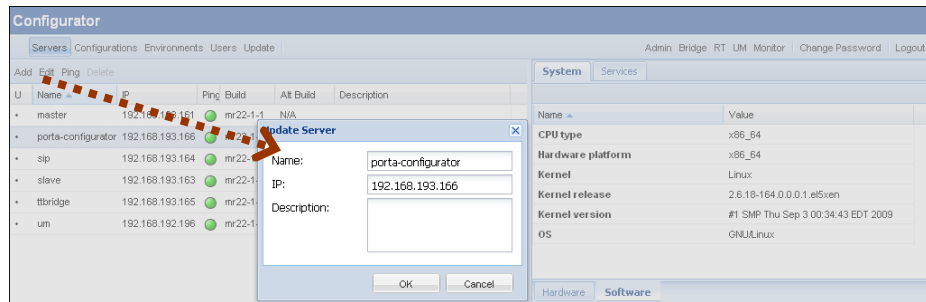
If you want to add a new server (make sure you first install the PortaSwitch software on it using the DVD provided) – click the **Add** button in the toolbar and follow the steps shown in the following sequence of screenshots:



NOTE: When adding a server to the installation on this page an IP is specified. This IP is automatically considered to be internal, so it (and its NIC) becomes read-only in the Network configuration UI.

To edit attributes of an existing server, you click on the server you want to modify and then click **Edit**. You will see the available options at the top of the columns.



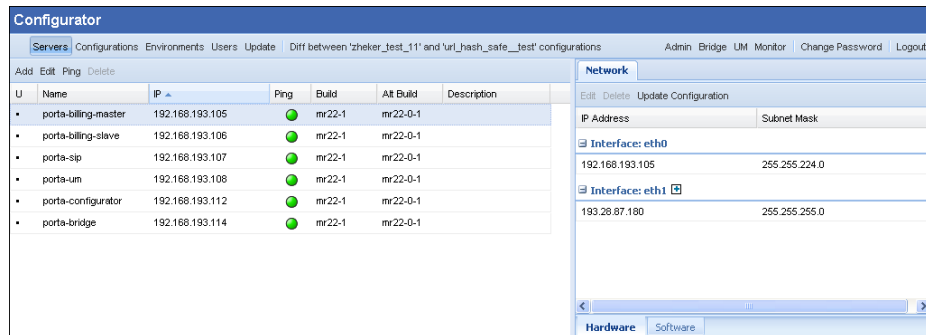


Additional servers configuration

When selecting a server in the list, an additional block is shown on the right. This block contains several pages with different server properties. At the bottom of this block you can switch between the **Hardware** and **Software** pages to access the corresponding information.

Hardware page

This page shows the list of all IP addresses configured for the selected server.




The list is grouped by a network card. The following columns are shown in the list:

- IP Address
- Subnet Mask

To change either the IP address and / or the subnet mask, double click on an appropriate list element. In the pop-up window you can edit the parameters and then press OK.

NOTE: Network interface with internal IP cannot be modified.

The  icon next to the network interface name allows you to add a new IP address to this interface. This button is only shown for network interfaces which do not have an internal IP.

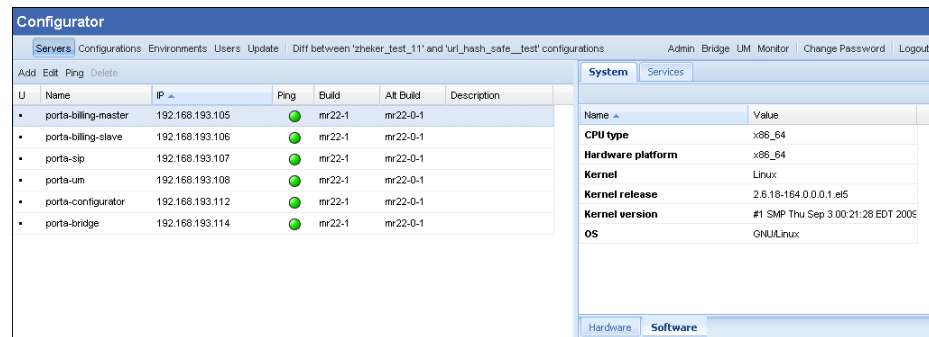
The **Hardware** page provides the following activities:

Field	Description
Edit	Allows you to edit a currently selected IP address.
Delete	Allows you to delete the selected IP address.
Update Configuration	Gathers the network configuration information from all servers and updates the block content accordingly.

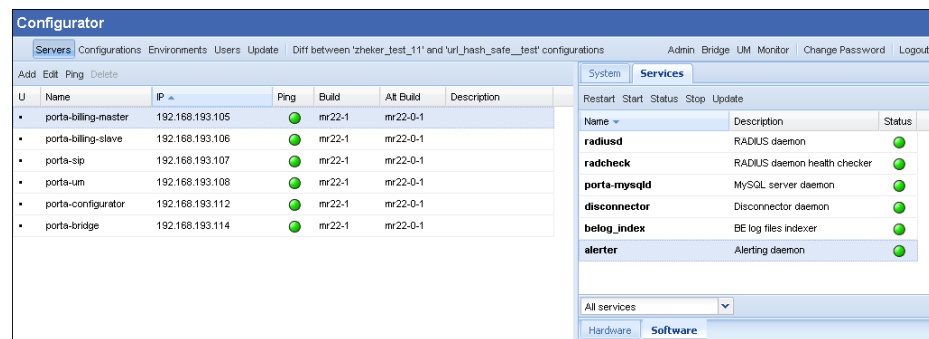
Software page

Here you can find the information about the System and its Services by choosing the appropriate tab at the top of the block.

The **System** tab displays basic information about the selected server.



Using the **Services** tab you can control the services that are located on the selected server.



The **Services** tab provides the following activities:

Field	Description
Reload	Re-reads certain configuration parameters without an actual restart.
Restart	Restarts service.
Start	Starts service.

Status	Updates and shows the service status.
Stop	Stops service.
Update	Updates the status of all services on the current server.

If some instances are created on the server, you can specify which instance’s services to show. Choose one from the drop-down list at the bottom of the block. The option “All services” shows the services for all instances located on the selected server.

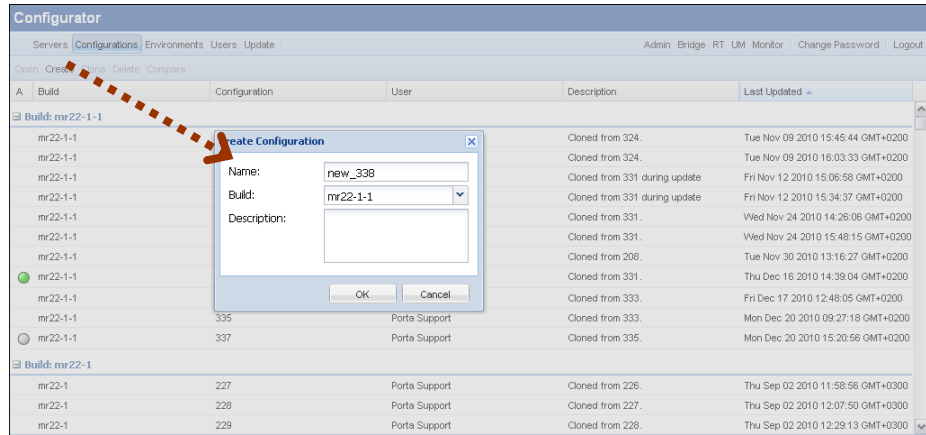
Configurations

This tab allows you to manage the configurations used in your PortaSwitch system (each row represents a configuration tree).

A	Build	Configuration	User	Description	Last Updated
Build: mr22-1-1					
	mr22-1-1	330	Porta Support	Cloned from 324.	Tue Nov 09 2010 15:45:44 GMT+0200
	mr22-1-1	331	Porta Support	Cloned from 324.	Tue Nov 09 2010 16:03:33 GMT+0200
	mr22-1-1	331	Porta Support	Cloned from 331 during update	Fri Nov 12 2010 15:06:58 GMT+0200
	mr22-1-1	331	Porta Support	Cloned from 331 during update	Fri Nov 12 2010 15:34:37 GMT+0200
	mr22-1-1	332	Porta Support	Cloned from 331.	Wed Nov 24 2010 14:26:06 GMT+0200
	mr22-1-1	334	Porta Support	Cloned from 331.	Wed Nov 24 2010 15:48:15 GMT+0200
	mr22-1-1	test	Porta Support	Cloned from 208.	Tue Nov 30 2010 13:16:27 GMT+0200
	mr22-1-1	333	Porta Support	Cloned from 331.	Thu Dec 16 2010 14:39:04 GMT+0200
	mr22-1-1	new_test	Porta Support	Cloned from 333.	Fri Dec 17 2010 12:48:05 GMT+0200
	mr22-1-1	335	Porta Support	Cloned from 333.	Mon Dec 20 2010 09:27:18 GMT+0200
	mr22-1-1	337	Porta Support	Cloned from 335.	Mon Dec 20 2010 15:20:56 GMT+0200
Build: mr22-1					
	mr22-1	227	Porta Support	Cloned from 226.	Thu Sep 02 2010 11:58:56 GMT+0300
	mr22-1	228	Porta Support	Cloned from 227.	Thu Sep 02 2010 12:07:50 GMT+0300
	mr22-1	229	Porta Support	Cloned from 226.	Thu Sep 02 2010 12:28:13 GMT+0300

Field	Description
A	Shows the type of configuration: <ul style="list-style-type: none"> • green button – active configuration (the one currently applied to your system) • grey button – backup configuration (the configuration previously used)
Build	The build to which the configuration refers.
Configuration	The name of the configuration.
User	The user who performed the configuration.
Created	The time when the configuration was originally created.
Description	A short description of the configuration. This field is not mandatory.
Last Updated	The time when the configuration was last edited.

You can create a new configuration by pressing the **Create** button, typing in its name and description and choosing which software version it applies to.

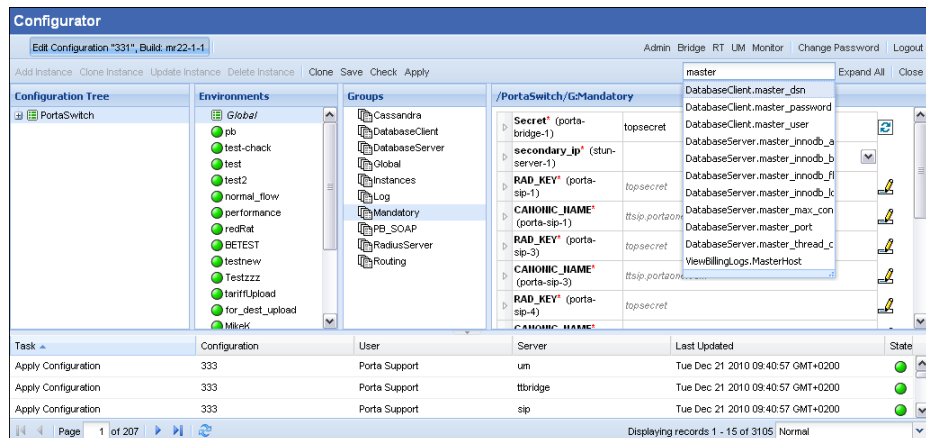


If the configuration already exists, you can open it by double-clicking or by clicking on the **Open** button.

You can clone the configuration by pressing the **Clone** button (to clone a configuration means to copy it), or delete it using the **Delete** button.

You cannot change or delete an existing active or backup configuration. This is to ensure that there is always a “stable” configuration you can use for rollback. You can open such a configuration for review using the **Open** button, or you can create a new configuration as its exact copy (and then edit this new configuration) by using the **Clone** button.

You will see a Configuration Tree, Environments, Groups and a window where all the information about a given service is shown.



NOTE: When you apply a backup PortaSwitch configuration, the backup network configuration is simultaneously being applied.

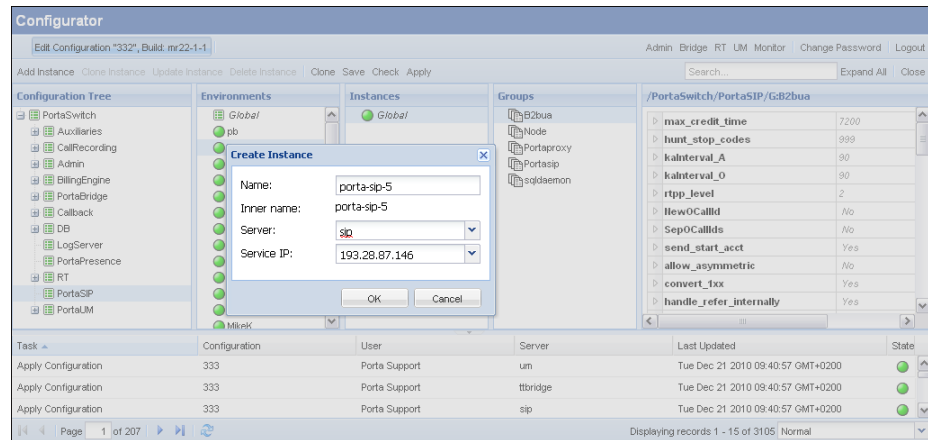
You can easily compare two configurations and see the differences between them. Choose two configurations by holding down the Ctrl button on your keyboard, and then press the **Compare** button which will become highlighted above.

The top screenshot shows the Configurator interface with a list of configurations. Configuration 341 is selected. The bottom screenshot shows the 'Diff between '341' and '338' configurations' window, displaying differences in option values for instance 341 and 338.

Option Name	Env	Instance	341	338
CallbackTriggerMAIL_env_map	porta-callback	Default		1;callback@ttslave.portaone.com;1;callback-um@ttslave.portaone.com;gw;1S
CallbackTriggerSMS_env_map	porta-callback	Default		1;777;sip;193.28.87.56;193.28.87
CallbackTriggerSMS_inbound_provider	porta-callback	Default		Modem
CallbackTriggerSMS_outbound_provider	porta-callback	Default		Modem
CallbackTriggerWEB_env_map	porta-callback	Default		1;https://ttslave.portaone.com:8961;https://ttslave.portaone.com:8961/sip;193.28.87.56;193.28.87.146
CustomerLinks_customer_section	porta-callback	Default		section='Default-Customer'; Customer='Juck Brown'; Product='SIP Product'; Batch=''; Billing_model='1'; Balance='0'; CreditLimit=''; Life_time=''; CurrencyPrecision='2'; SMSTemplatesDir='/home/porta-callback/sms-templates'; CompanyName=''; Site='';
CustomerLinks_customer_section_link	porta-callback	Default		777=Default-Customer

Instances

A service which runs on your server (e.g., “web interface for customer self-care” or “SIP server”) is called an instance. Each service requires its own IP address, so that it can be accessed by your customers. To add a new instance, press the **Add Instance** button. In the pop-up window, enter the Name, Inner Name and Service IP, choose the server on which this instance will run, and then press OK.



In the edit window, you will see fields with values: italics mark the default values that you can modify. The icon allows you to edit a given field. The icon resets the current value of an option to the default one. After all the values have been set, press the **Save** button. Next, press the **Check** button to see whether the configuration is valid (e.g., all the required options have values assigned to them); then press the **Apply** button. As soon as the configuration has been applied, you will see this action displayed in the Task menu.

There is also a Search option inside each configuration tree. You can use it when looking for an option that you want to apply. Simply start entering the name of the option to see all the possible variants.



NOTE: PortaSIP instances are created in the Environments section, but not in the root directory.

NOTE: In the Admin node you can only create one instance.

Environments

By using this tab you can manage virtual environments.

U	U	Name	Description
• 1		plb	The default environment
4		test-check	
6		test	test environment
7		test2	
13		normal_flow	
14		performance	

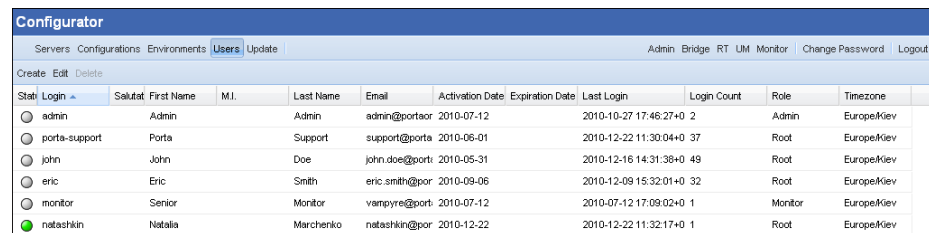
Field	Description
Used	If you see a dot here, it means that this server has been used in the configuration. You cannot delete it; you can only edit its data.

i_env	The internal ID of the environment.
Name	The name of the environment.
Description	A short description of the configuration. This field is not mandatory.

Only an Admin user can create and delete environments.

Users

This tab is for displaying information about users who have access to the configuration server.



Stat	Login	Salutat	First Name	M.I.	Last Name	Email	Activation Date	Expiration Date	Last Login	Login Count	Role	Timezone
<input type="radio"/>	admin		Admin		Admin	admin@porteor	2010-07-12		2010-10-27 17:46:27+0	2	Admin	Europe/Kiev
<input type="radio"/>	porta-support		Porta		Support	support@porta	2010-06-01		2010-12-22 11:30:04+0	37	Root	Europe/Kiev
<input type="radio"/>	john		John		Doe	john.doe@por	2010-05-31		2010-12-16 14:31:38+0	49	Root	Europe/Kiev
<input type="radio"/>	eric		Eric		Smith	eric.smith@por	2010-09-06		2010-12-09 15:32:01+0	32	Root	Europe/Kiev
<input type="radio"/>	monitor		Senior		Monitor	vampyre@por	2010-07-12		2010-07-12 17:09:02+0	1	Monitor	Europe/Kiev
<input checked="" type="radio"/>	natashkin		Natalia		Marchenko	natashkin@por	2010-12-22		2010-12-22 11:32:17+0	1	Root	Europe/Kiev

Field	Description
Status	The status of the user: when the button is grey, the user is offline; when it is green, the user is online.
Login	Shows which name the user is logged in with.
Salutation	Defines which greeting will appear to the user (e.g., Mr., Ms., Mrs., etc.).
First Name	The first name of the user.
M.I.	The middle name of the user.
Last Name	The last name of the user.
E-mail	The email address of the user.
Activation Date	The date when the user was activated.
Expiration Date	The date when the user's rights will expire.
Last Login	The date of the user's last login.
Login Count	The number of login times.
Role	Shows the user's role (e.g., root, admin, read-only, monitor).
Time Zone	The time zone in which the user is operating.

You can create and delete users and edit information about them using the **Create**, **Delete** and **Edit** buttons, respectively.

NOTE: The user will be able to log in only after the activation date. Likewise, the user will not be able to log in after the expiration date.

Update

Since Maintenance Release 22 the update is performed via configurator. If you wish to update your system, please contact the PortaOne support team at support@portaone.com, who will provide you with further assistance.

Information Window

Using this tab, you can view information about how configuration changes are applied to the system.

Task	Configuration	User	Server	Last Updated	State
Apply Configuration	333	Porta Support	um	Tue Dec 21 2010 09:40:57 GMT+0200	●
Apply Configuration	333	Porta Support	tbridge	Tue Dec 21 2010 09:40:57 GMT+0200	●
Apply Configuration	333	Porta Support	sip	Tue Dec 21 2010 09:40:57 GMT+0200	●
Apply Configuration	333	Porta Support	master	Tue Dec 21 2010 09:40:57 GMT+0200	●
Apply Configuration	333	Porta Support	slave	Tue Dec 21 2010 09:40:58 GMT+0200	●
Apply Configuration	333	Porta Support	porta-configurator	Tue Dec 21 2010 09:41:02 GMT+0200	●
Apply Configuration	337	Porta Support	um	Mon Dec 20 2010 16:53:39 GMT+0200	●
Apply Configuration	337	Porta Support	tbridge	Mon Dec 20 2010 16:53:41 GMT+0200	●
Apply Configuration	337	Porta Support	slave	Mon Dec 20 2010 16:53:42 GMT+0200	●
Apply Configuration	337	Porta Support	sip	Mon Dec 20 2010 16:53:45 GMT+0200	●
Apply Configuration	337	Porta Support	porta-configurator	Mon Dec 20 2010 16:53:47 GMT+0200	●
Apply Configuration	337	Porta Support	master	Mon Dec 20 2010 16:53:45 GMT+0200	●
Configure Monitor	333	Porta Support	porta-configurator	Tue Dec 21 2010 09:41:02 GMT+0200	●
Configure Monitor	337	Porta Support	porta-configurator	Mon Dec 20 2010 16:53:48 GMT+0200	●
Configure Monitor	333	Porta Support	porta-configurator	Mon Dec 20 2010 15:17:42 GMT+0200	●

Field	Description
Task	Shows the type of action performed, e.g., “Apply Configuration.”
Configuration	Shows the configuration which was used.
User	Shows who performed the task.
Server	The server where the task was performed.
IP	The IP address of the server where the task was performed.
Created	The time when the action was started.
Last Updated	The time when the information about the performed action was updated.

State	Indicates the state of the task: <ul style="list-style-type: none">• grey button – the task has started• yellow button – the task is being performed• green button – the task has been performed successfully• red button – the task has failed
--------------	--

At the bottom of the page, below the Information Window, you can see the options related to this page. You can go to the next page or the previous page, jump to the first or last page, or use the Refresh button to update any of the pages.