

Porta  Switch™



**Configuration Server
Web Reference**

Maintenance Release 21

Copyright Notice & Disclaimers

Copyright © 2000-2010 PortaOne, Inc. All rights reserved

**PortaSwitch® Configuration Server Web Reference, July 2010
Maintenance Release 21
V1.21.8**

Please address your comments and suggestions to: Sales Department,
PortaOne, Inc. Suite #408, 2963 Glen Drive, Coquitlam BC V3B 2P7
Canada.

Changes may be made periodically to the information in this publication. Such changes will be incorporated in new editions of the guide. The software described in this document is furnished under a license agreement, and may be used or copied only in accordance with the terms thereof. It is against the law to copy the software on any other medium, except as specifically provided in the license agreement. The licensee may make one copy of the software for backup purposes. No part of this publication may be reproduced, stored in a retrieval system, or transmitted in any form or by any means, electronic, mechanical, photocopied, recorded or otherwise, without the prior written permission of PortaOne, Inc.

The software license and limited warranty for the accompanying products are set forth in the information packet supplied with the product, and are incorporated herein by this reference. If you cannot locate the software license, contact your PortaOne representative for a copy.

All product names mentioned in this manual are for identification purposes only, and are either trademarks or registered trademarks of their respective owners.

Table of Contents

Document Objectives..... 4
Hardware and Software Requirements 4
1. Introduction..... 5
2. System Management 9
Servers 10
Configurations 11
Environments 14
Users 15
Information Window 16

Preface

This document provides a general overview of the web interface for the PortaSwitch® configuration server.

Where to Get the Latest Version of This Guide

The hard copy of this guide is updated at major releases only, and does not always contain the latest material on enhancements occurring between minor releases. The online copy of this guide is always up to date, and integrates the latest changes to the product. You can access the latest copy of this guide at: www.portaone.com/support/documentation/

Conventions

This publication uses the following conventions:

- Commands and keywords are given in **boldface**
- Terminal sessions, console screens, or system file names are displayed in fixed width font



Exclamation mark draws your attention to important information or action.

NOTE: Notes contain helpful suggestions about or references to materials not contained in this manual.



Timesaver means that you can save time by performing the action described in the paragraph.



Tips provide information that might help you solve a problem.

Trademarks and copyrights

PortaBilling®, PortaSIP®, PortaUM® and PortaSwitch® are registered trademarks of PortaOne, Inc.

Document Objectives

The target audience of this document is system administrators, VoIP engineers, and system operators who will be managing your PortaSwitch® system via the web interface of the configuration server.

Hardware and Software Requirements

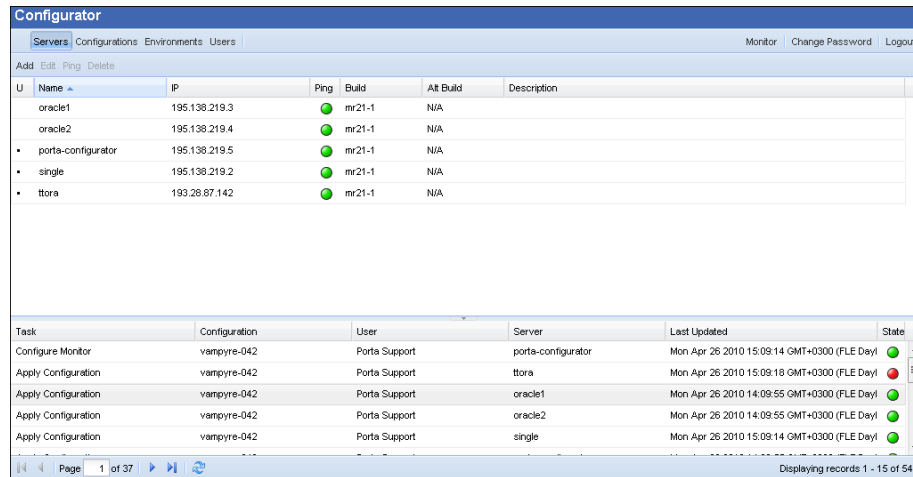
Client System Recommendations

- OS: Windows XP, Vista or 7, UNIX or Mac OS X
- Browser: Internet Explorer 7.0, FireFox 3.x with JavaScript enabled.
- Spreadsheet processor (MS Excel)
- Display settings:
 - Minimum screen resolution: 1024 x 768
 - Color palette: 16 bit color (minimum)

1 . Introduction

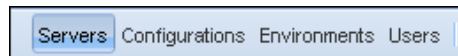
The web interface of the configuration server contains:

- Tab selector
- Action buttons
- Toolbar
- Data table
- Information window



Tab Selector

In the upper left-hand corner are four functional tabs, which allow you to manage different elements of your PortaSwitch system.

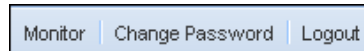


The functional tabs are: Servers, Configurations, Environments and Users. The meaning and available functionality for each tab is explained in the following sections.

The entire set of tabs is not accessible to all users. The access levels of users are the following: root, admin, read-only and monitor. **Root** has access to all options and tabs, and can also see the **Users** button and modify the information and rights of other users. **Admin** has access to all options except for the **Users** button. **Read-only** users have access to all the same tabs as **Root**, but cannot make changes. **Monitor** only has access to the monitoring system web interface via the **Monitor** button.

Action Buttons

Three buttons in the upper right-hand corner allow you to perform a given action irrespective of the current context.



The **Monitor** button takes you to the web interface of the monitoring facility for your PortaSwitch installation (as of Maintenance Release 21 this runs on the same server as the configuration interface).

The **Change Password** button allows you to change the password for the current user.

The **Logout** button terminates your current session on the web interface.

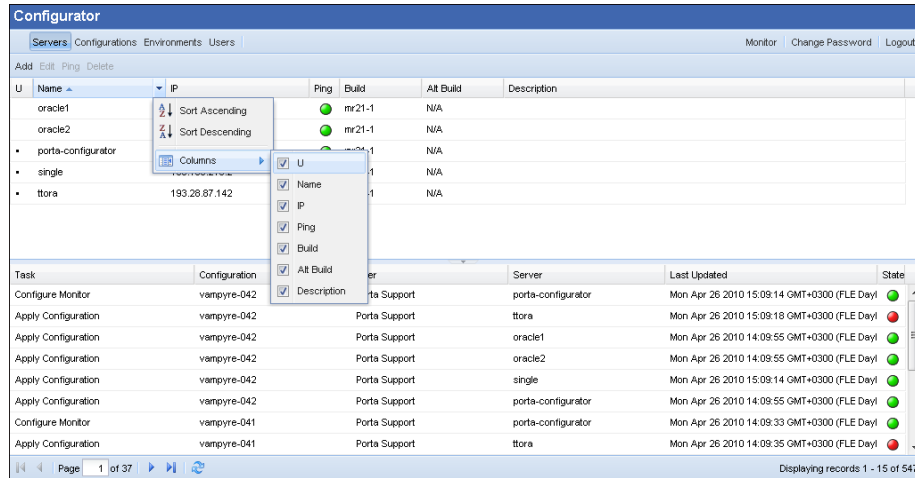
Toolbar

The Toolbar contains buttons that allow you to perform a specific operation with the data displayed in the data table below.

Data Table

The Data Table is your main working area, since it contains the data you will edit.

You can change the number of columns and sort them in ascending or descending order by clicking your mouse on the field name of any of these tabs. If you point your mouse at the name field you will see a triangle; click on it and a drop-down menu will appear. You can choose how to sort your data and add or remove columns by ticking or unticking them. You can also group information by a certain field using the Group By This Field option.



U	Name	IP	Ping	Build	Alt Build	Description
	oracle1		●	mr21-1	N/A	
	oracle2		●	mr21-1	N/A	
	porta-configurator		●	mr21-1	N/A	
	single		●	mr21-1	N/A	
	ttora	193.28.87.142	●	mr21-1	N/A	

Task	Configuration	er	Server	Last Updated	State
Configure Monitor	vampyre-042	Porta Support	porta-configurator	Mon Apr 26 2010 15:09:14 GMT+0300 (FLE Day)	●
Apply Configuration	vampyre-042	Porta Support	ttora	Mon Apr 26 2010 15:09:18 GMT+0300 (FLE Day)	●
Apply Configuration	vampyre-042	Porta Support	oracle1	Mon Apr 26 2010 14:09:55 GMT+0300 (FLE Day)	●
Apply Configuration	vampyre-042	Porta Support	oracle2	Mon Apr 26 2010 14:09:55 GMT+0300 (FLE Day)	●
Apply Configuration	vampyre-042	Porta Support	single	Mon Apr 26 2010 15:09:14 GMT+0300 (FLE Day)	●
Apply Configuration	vampyre-042	Porta Support	porta-configurator	Mon Apr 26 2010 14:09:55 GMT+0300 (FLE Day)	●
Configure Monitor	vampyre-041	Porta Support	porta-configurator	Mon Apr 26 2010 14:09:33 GMT+0300 (FLE Day)	●
Apply Configuration	vampyre-041	Porta Support	ttora	Mon Apr 26 2010 14:09:35 GMT+0300 (FLE Day)	●

Below you can see the task pages illustrating what tasks were performed. You can see the user who performed the task, the server on which the task was performed, and the time of the last update.

2. System Management

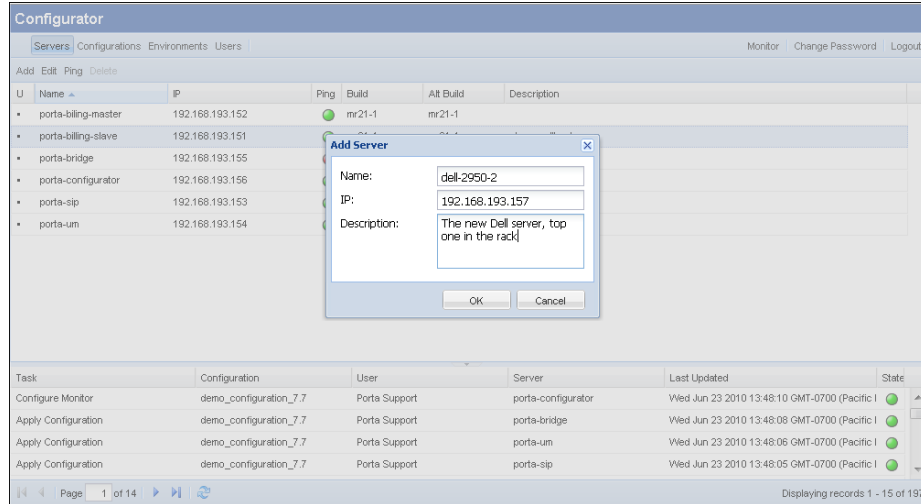
Servers

The information on the **Servers** tab shows all the servers that are part of your installation.

Configurator						
Servers Configurations Environments Users						
Add Edit Ping Delete						
U	Name ▲	IP	Ping	Build	Alt Build	Description
	oracle1	195.138.219.3		mr21-1	N/A	
	oracle2	195.138.219.4		mr21-1	N/A	
•	porta-configurator	195.138.219.5		mr21-1	N/A	
•	single	195.138.219.2		mr21-1	N/A	
•	tтора	193.28.87.142		mr21-1	N/A	

Field	Description
Used	If you see a dot here, it means that this server has some instances assigned to it, i.e. it is actively running some services. In this case you cannot delete it, you can only edit its data.
Name	The name of the server.
IP	The internal IP address of the server – this address is used on the internal LAN to manage the server from the configuration interface.
Ping	This field shows whether the current server is reachable (green light) or unreachable (red light).
Build	The current software version which is installed and used on the server.
Alt Build	Another software version currently installed on the server (on the inactive partition); a rollback to this version is possible. N/A means that the alternative partition does not contain any data.
Description	A short description of the server. This field is optional.

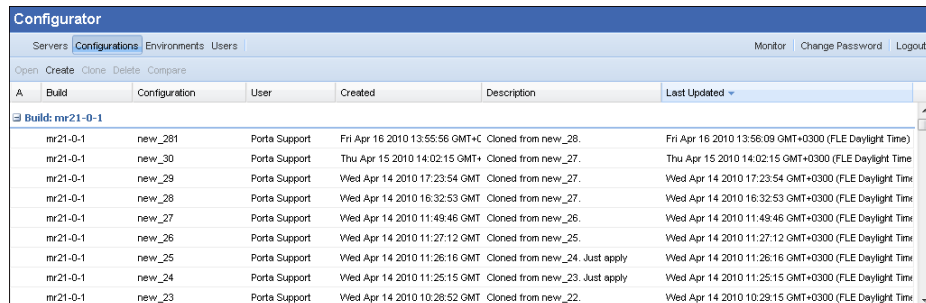
If you want to add a new server (make sure you first install the PortaSwitch software on it, using the DVD provided) – click the **Add** button in the toolbar. To edit attributes of an existing server, you should click on the server you want to modify and click **Edit**. You will then see the available options right at the top of the columns.



Field	Description
Add	Allows you to add more servers. You will see a pop-up window where you should enter the name of the server, its IP address, and a description; then press OK.
Edit	Allows you to edit the data about a given server.
Ping	Allows you to check the availability of the server. Just click on the Ping icon and the configuration server will attempt to verify that it can connect to this server and that the server responds to the management commands. If you see a green light, then the server is available; if red, then it is not available.
Delete	Allows you to delete the chosen server.

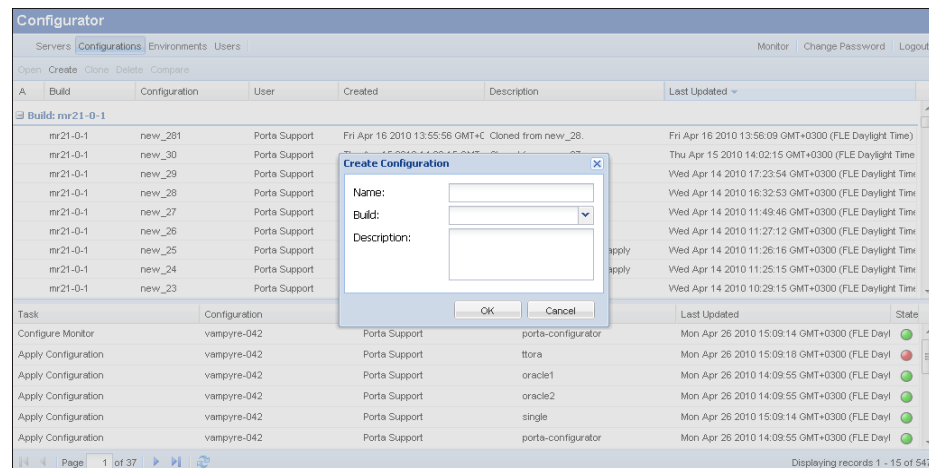
Configurations

This tab allows you to manage the configurations used in your PortaSwitch system (each row represents a configuration tree).



Field	Description
A	Shows the type of configuration: <ul style="list-style-type: none"> • green button – active configuration (the one currently applied to your system) • grey button – backup configuration (the previously used configuration)
Build	The build to which the configuration refers.
Configuration	The name of the configuration.
User	The user who performed the configuration.
Created	The time when the configuration was originally created.
Description	A short description of the configuration. This field is not mandatory.
Last Updated	The time when the configuration was last edited.

If no configurations have been created yet, then the **Create** option will be highlighted. You can create a new configuration by pressing the **Create** button and then specifying its name and description and choosing which software version it applies to.

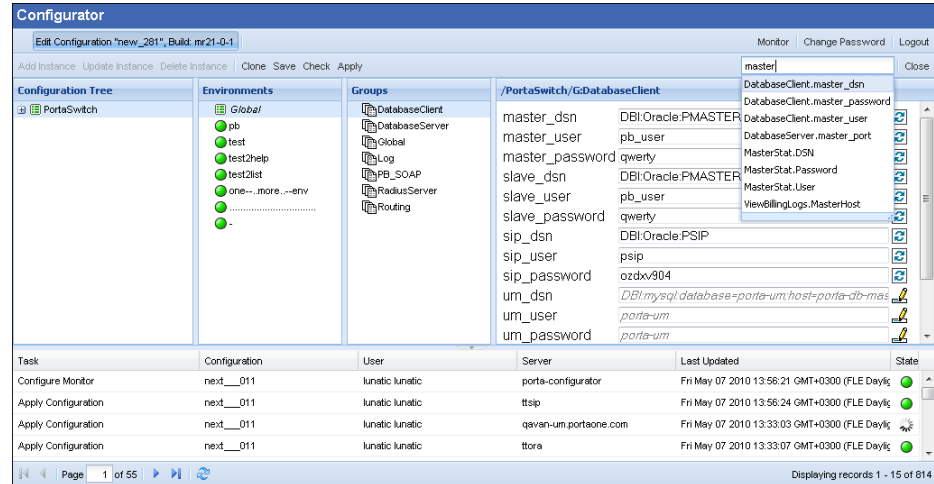


If the configuration already exists, then you can open it with a double-click or by clicking the **Open** button.

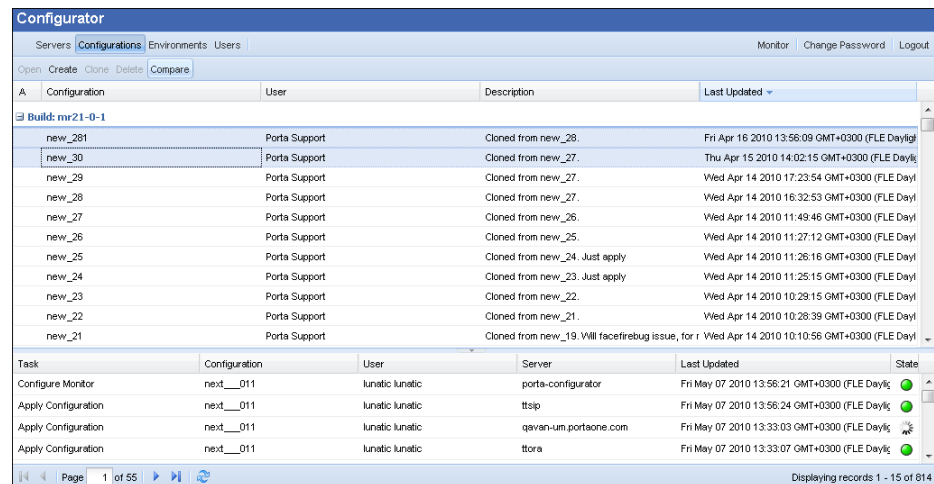
You can clone the configuration by pressing the **Clone** button (to clone a configuration means to copy it), or delete it using the **Delete** button.

You cannot change or delete an existing active or backup configuration. This is to ensure that there is always some “stable” configuration you can use for rollback. You can open such a configuration for review using the

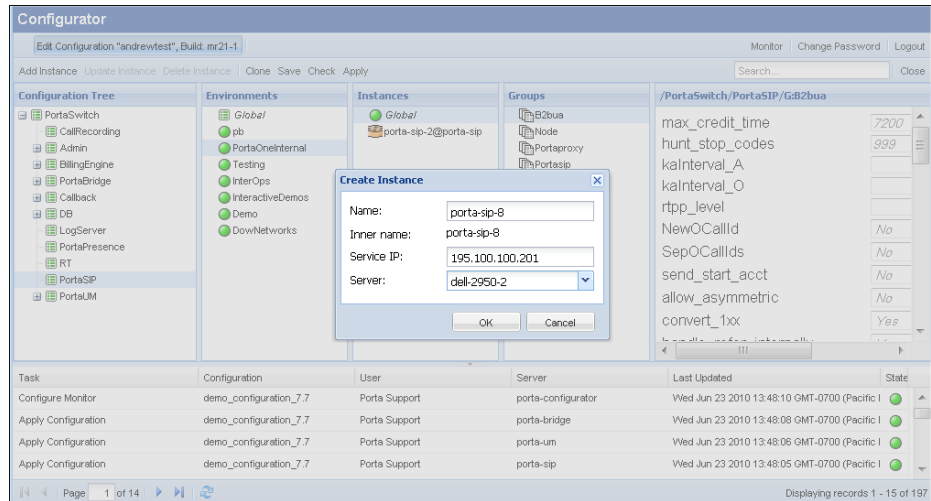
Open button, or you can create a new configuration as its exact copy (and then edit this new configuration) using the **Clone** button. You will see a Configuration Tree, Environments, Groups, and a window where all the information about a given service is shown.



You can easily compare two configurations and see the differences between them. Choose the two configurations by holding down the Ctrl button on your keyboard, then press the **Compare** button which will be highlighted above.



A service which runs on your server (e.g. “web interface for customer self-care” or “SIP server”) is called an instance. Each service requires its own IP address, so that it can be accessed by your customers. To add a new instance, press the **Add Instance** button. In the pop-up window, enter the Name, Inner Name and Service IP, choose the server on which this instance will run, and then press OK.



In the edit window, you will see fields with some values: italics mark the default values which you can modify. The icon allows you to edit the given field. The icon resets the current value of an option to the default one. After all the values have been set, press the **Save** button. Next, press the **Check** button to see whether the configuration is valid (e.g. all the required options have values assigned to them); then press the **Apply** button. As soon as the configuration has been applied, you will see this action displayed in the Task menu.

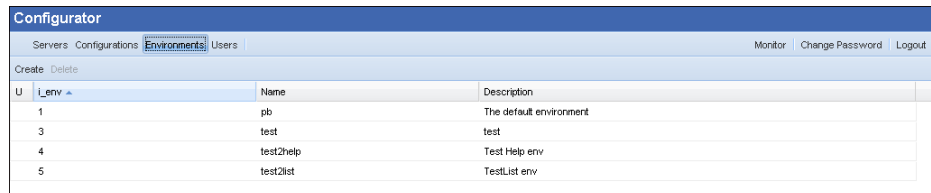
There is also a Search option inside each configuration tree. You can use this when looking for an option that you want to apply. Simply start entering the name of the option to see all the possible variants.

Note: PortaSIP instances are created in the Environments section, but not in the root directory.

Note: In Admin node you can create only one instance.

Environments

Using this tab you can manage virtual environments.



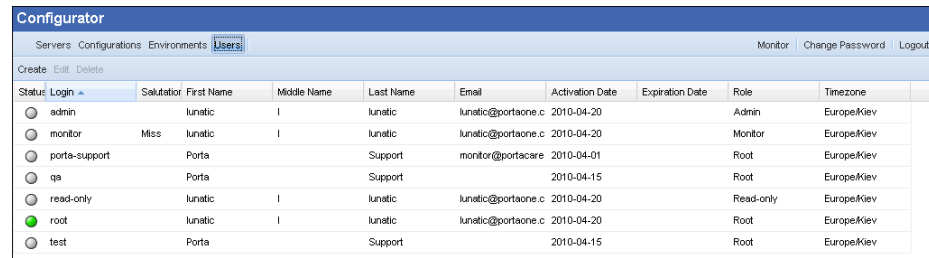
Field	Description
Used	If you see a dot here, it means that this environment has at least one active instance. You cannot delete it then, you can only edit its data.

i_env	The internal ID of the environment.
Name	The name of the environment.
Description	A short description of the environment. This field is not mandatory.

Only the Admin user can create and delete environments using the appropriate buttons.

Users

This tab is for displaying information about users who have access to the configuration server.



Status	Login	Salutation	First Name	Middle Name	Last Name	Email	Activation Date	Expiration Date	Role	Timezone
<input type="radio"/>	admin		lunatic	I	lunatic	lunatic@portaone.c	2010-04-20		Admin	Europe/Kiev
<input type="radio"/>	monitor	Miss	lunatic	I	lunatic	lunatic@portaone.c	2010-04-20		Monitor	Europe/Kiev
<input type="radio"/>	porta-support	Porta			Support	monitor@portacare	2010-04-01		Root	Europe/Kiev
<input type="radio"/>	qa	Porta			Support		2010-04-15		Root	Europe/Kiev
<input type="radio"/>	read-only		lunatic	I	lunatic	lunatic@portaone.c	2010-04-20		Read-only	Europe/Kiev
<input checked="" type="radio"/>	root		lunatic	I	lunatic	lunatic@portaone.c	2010-04-20		Root	Europe/Kiev
<input type="radio"/>	test	Porta			Support		2010-04-15		Root	Europe/Kiev

Field	Description
Status	The status of the user: if the button is grey, the user is offline; if it is green, the user is online.
Login	Shows under which name the user is logged in.
Salutation	Defines the greeting that will appear in letters to the user (e.g. Mr, Mrs, etc.)
First Name	The first name of the user.
Middle Name	The middle name of the user.
Last Name	The last name of the user.
E-mail	The email address of the user.
Activation Date	The date when the user was activated.
Expiration Date	The date when the user's rights will expire.
Last Login	The date of the user's last login.
Login Count	The number of login times.
Role	Shows the user's role (e.g. root, admin, read-only, monitor).

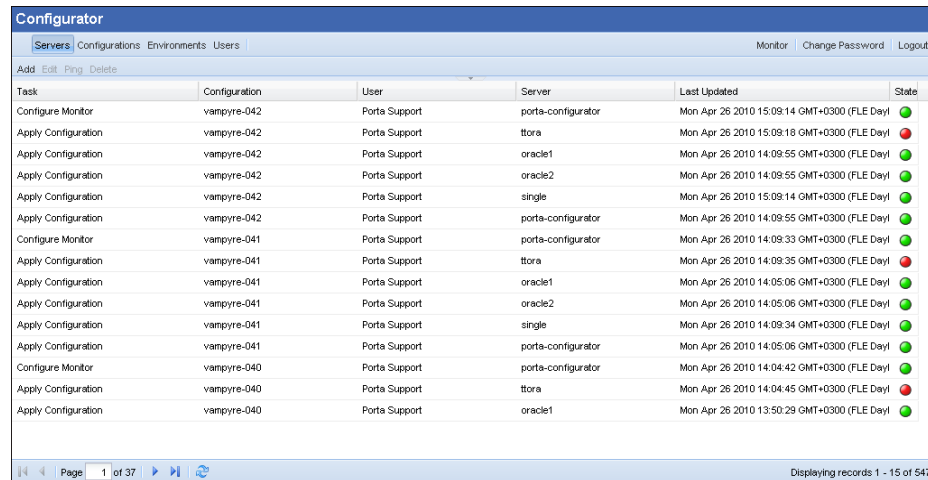
Time Zone	The time zone in which the user is operating.
------------------	---

You can create and delete users and edit information about them using the **Create**, **Delete** and **Edit** buttons, respectively.

Note: The user will be able to log in only after the activation date. Likewise, the user will not be able to log in after the expiration date.

Information Window

Using this tab, you can view information about how configuration changes were applied to the system.



The screenshot shows the 'Configurator' application interface. At the top, there are tabs for 'Servers', 'Configurations', 'Environments', and 'Users'. Below the tabs is a table with columns: Task, Configuration, User, Server, Last Updated, and State. The table contains 16 rows of configuration tasks, including 'Configure Monitor' and 'Apply Configuration' for various configurations like 'vampyre-042', 'vampyre-041', and 'vampyre-040'. The 'State' column shows colored circles (green, yellow, red) indicating the task status. At the bottom of the screenshot, there is a pagination bar showing 'Page 1 of 37' and 'Displaying records 1 - 15 of 547'.

Field	Description
Task	Shows the type of action performed, e.g. “Apply Configuration”
Configuration	Shows the configuration which was used.
User	Shows who performed the task.
Server	The server where the task was performed.
IP	The IP address of the server where the task was performed.
Created	The time when the action was started.
Last Updated	The time when the information about the performed action was updated.
State	Indicates the state of the task: <ul style="list-style-type: none"> • grey button – the task has started; • yellow button – the task is being performed; • green button – the task has been performed successfully;

	<ul style="list-style-type: none">• red button – the task has failed.
--	---

At the bottom of the page, below the Information Window, you can see the options related to this page. You can go to the next or previous page, jump to the first or last page, or use the Refresh button to update any page.